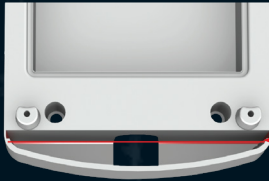
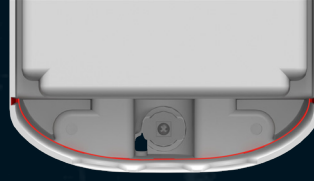


Installation:

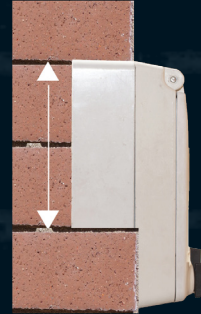
Flush Mounted:



Cut the PSO-1 Stealth on the provided cut lines



Cut the PSO-2 Stealth on the provided cut lines



Once optional cut-section is removed, PSO-1 Stealth / PSO-2 Stealth fits between two bricks making installation simple and easy.

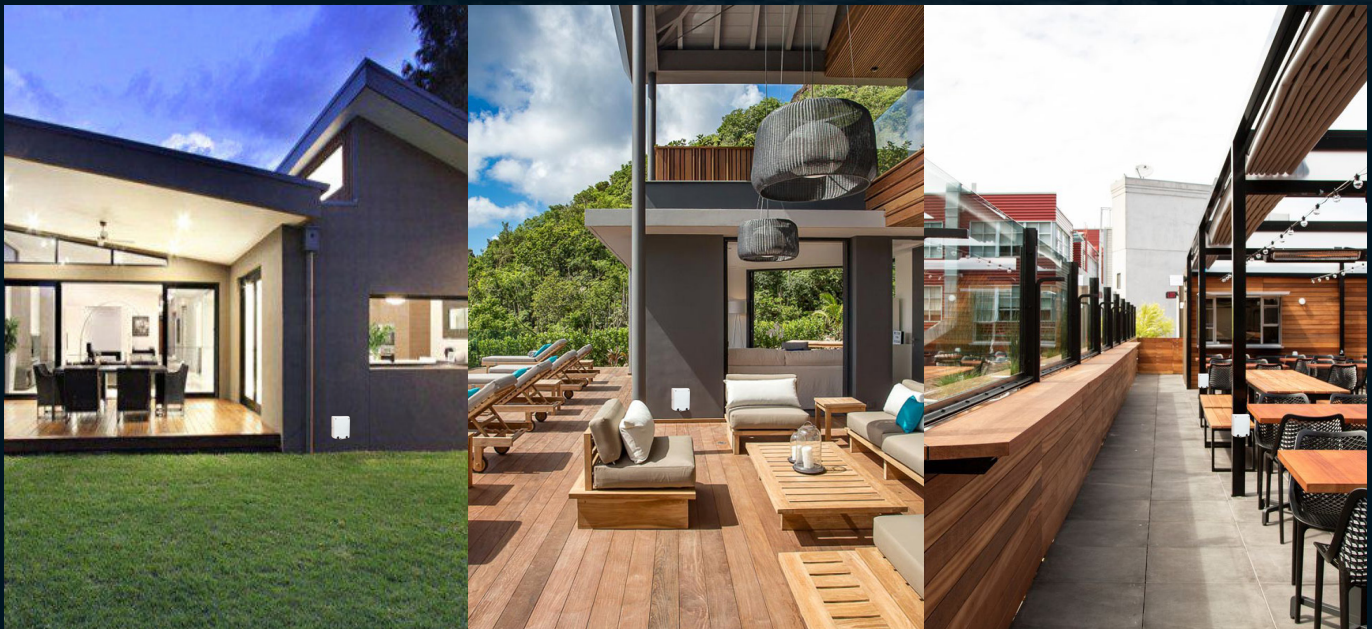
Surface Mounted:

***NO CUTTING REQUIRED FOR SURFACE MOUNTING**



Place the PSO-1 Stealth/ PSO-2 Stealth in the desired area and fix on wall using 6mm Nail in anchor screws. This modern weatherproof plugbox leaves you with a modern finish PLUS all the benefits of the original plug box you know and have trusted for 40 years

Note: South Africa's new plug and socket standard, SANS 164-2 or ZA Plug, has become mandatory for new installations. This means that any new buildings erected must incorporate electrical sockets that conform to the new standard .



Enclosures

Hinges

Locks

Handles

Accessories

Rotary Operating Handles

Insulators

Transformer Equipment

Index

PSO-2 Stealth

Weatherproof socket outlet box



Enclosures

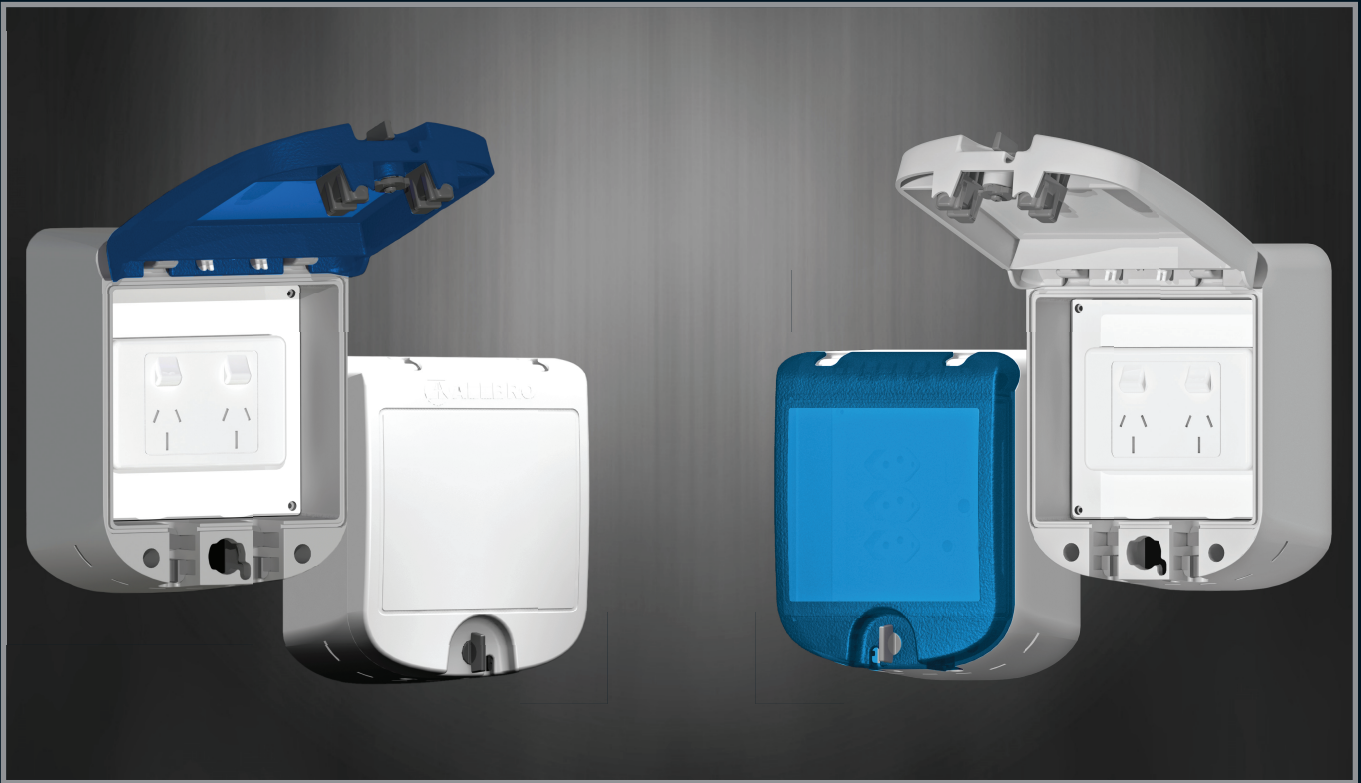
Material	DMC (Dough Moulding Compound)
Operating Temperature	-50° C to + 200° C
Glow Wire Capability / Flammability	960° / UL94 V0
Expected UV Life (Direct Exposure)	GRP Flap 25 years + , Plastic Flap 3 - 5 years exposed
IP Level	IP66 with/without cable
Security Level	Level 1 without pad-lock and Level 3 with pad-lock

Hinges

Locks

Handles

Accessories



Rotary Operating Handles

Part Number	Description	H (mm)	W (mm)	D (mm)
040-955	PSO-2 Stealth GRP Window	208,5	167	107,5
040-954	PSO-2 Stealth PC Window	208,5	167	107,5

Note:
Plastic flap is not suitable for areas with direct sunlight.
PSO-2 Stealth is supplied without socket.

Insulators

The PSO-2 Stealth is the latest edition to the PSO-Stealth family. The PSO-2 Stealth has all the features and benefits of the PSO-1 Stealth with the addition key features that makes this weatherproof socket outlet box a must have!


The additional features of PSO-2 Stealth:

- PSO-2 Stealth can be fitted with most 4x4 sockets in the market.
- PSO-2 Stealth is IP66 with cable.

Transformer Equipment

- **Fully Waterproof (IP66)**
- **Flush/Surface Mounted**
- **Easy & Simple to install (See pg.75)**
- **Available with Plastic/GRP flap**
- **Pad-lockable**

Index



Pad-lockable
Stealth range fits pad-lock size 262,
*Size may vary according to make.