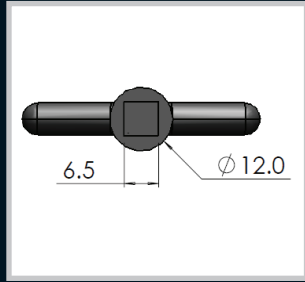
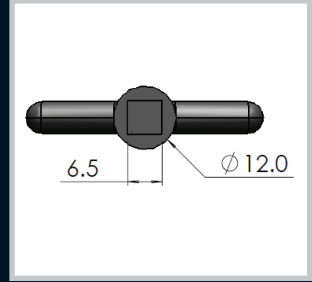


Enclosures



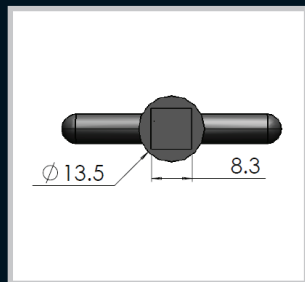
Part Number	Material and Finish	Description
6_1_12_1	ZDC Galvanized	T-shaped key 57mm long to unlock all quarter turn series with a 6mm square drive

Hinges



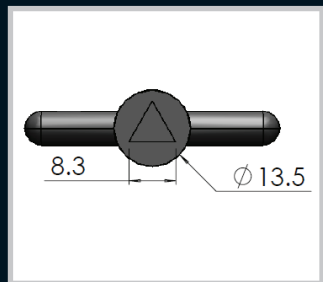
Part Number	Material and Finish	Description
6_1_12_2	Polycarbonate	T-shaped key 57mm long to unlock all quarter turn series with a 6mm square drive

Locks



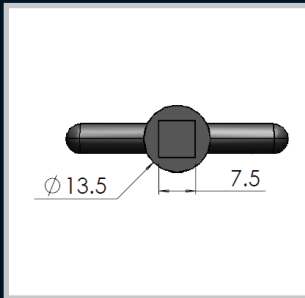
Part Number	Material and Finish	Description
8_2_135_1	ZDC Galvanized	T-shaped key 57mm long to unlock all quarter turn series with a 8mm square drive

Handles



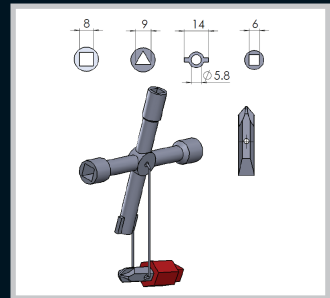
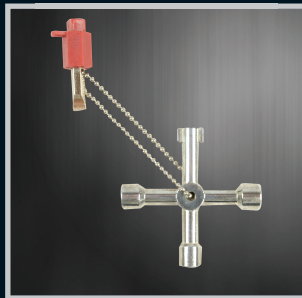
Part Number	Material and Finish	Description
8_3_135_1	ZDC Galvanized	T-shaped key 57mm long to unlock all quarter turn series with a 8mm Triangular drive

Accessories



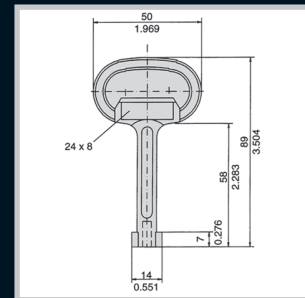
Part Number	Material and Finish	Description
7_2_135_1	ZDC Galvanized	T-shaped key 57mm long to unlock all quarter turn series with a 7mm square drive

Rotary Operating Handles



Part Number	Description
6WAY5_135_1	ZDC 8mm & 6mm square, 8mm tri, double bit and screwdriver adaptor

Insulators



Part Number	Material and Finish	Description
4_1_135_1	ZDC Galvanized	Double bit key

Transformer Equipment

Index