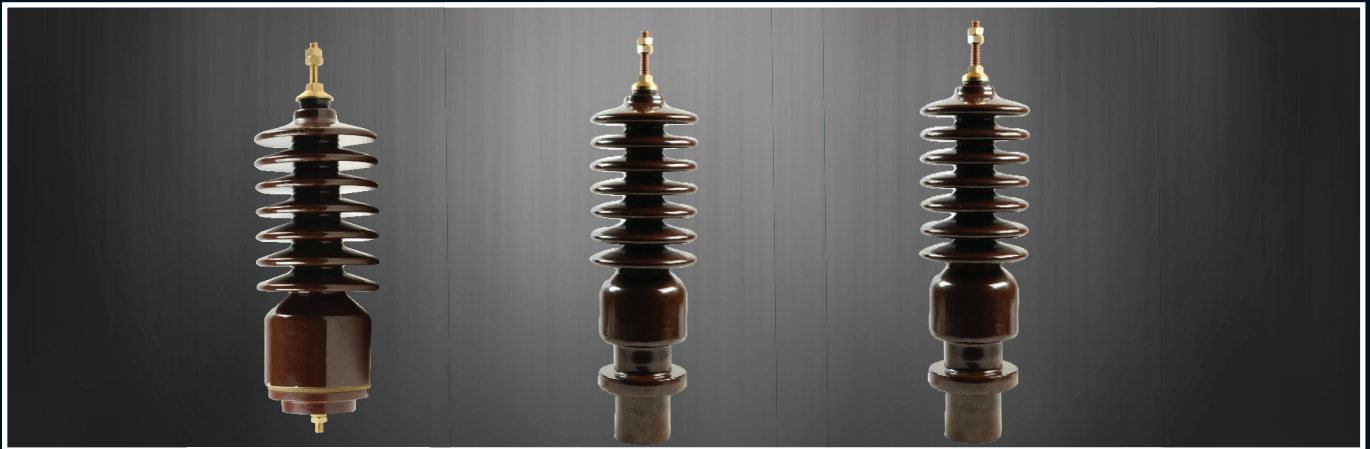


24Kv Outdoor Immersed Bushings

DL = Draw Lead
DL+T = Draw Lead + Tail



Part Number	Description	U.m (kV)	Ir (A)	Tank Hole Size (mm)	CD (mm)	Stem Thread Size	Stem Pitch (mm)	Recommended Stem Torque (N.m)	Recommended Clamp Torque (N.m)
040-331	SG250	24	250	90	31	M12	1,75	16	12
040-353	SGF250 DL	24	30	80	31	M12	1,75	16	12
040-353/R	SGF250 DL+T	24	30	80	31	M12	1,75	16	12
040-355	SGF250 Solid	24	250	80	31	M12	1,75	16	12

36Kv Outdoor Immersed Bushings



Part Number	Description	U.m (kV)	Ir (A)	Tank Hole Size (mm)	CD (mm)	Stem Thread Size	Stem Pitch (mm)	Recommended Stem Torque (N.m)	Recommended Clamp Torque (N.m)
040-222	LH250 DL + T	36	30	90	31	M12	1,75	16	16
040-221	LHC250	36	250	90	31	M12	1,75	16	-
040-341	LH630	36	630	90	31	M20	2	22	16
040-342	LHC630	36	630	90	31	M20	2	22	-
040-544	LH1250 Long DL	36	630	117	31	M30	2	32	16
040-541	LH1250 Long	36	1250	117	31	M30	2	32	12
040-545	LH1250 Long SR	36	1250	117	31	M30	2	32	12
040-546	LH2500 Long DL	36	630	117	31	M42	2	50	12
040-540	LH2500 Long	36	2500	117	31	M42	2	50	12
040-547	LH2500 Long SR	36	2500	117	31	M42	2	50	12
040-362	LJ250	48	250	90	31	M12	1,75	16	16

*** Note:**

Detailed drawings available on request.
Tank wall thickness minimum 3mm , maximum 6mm
Tank hole size tolerance is -0mm +1mm
AVS Cone rubbers see page 243
 AVS- Allbro Veri Seal

PLEASE NOTE: IT IS RECOMMENDED FOR ESTER OIL OR WHERE TRANSFORMERS ARE BEING USED FOR RENEWABLE ENERGY, THAT BUSHINGS BE SUPPLIED WITH AVS CONE RUBBERS & NEBAR CORK GASKETS.

KINDLY SPECIFY THE APPLICATION WHEN ORDERING.