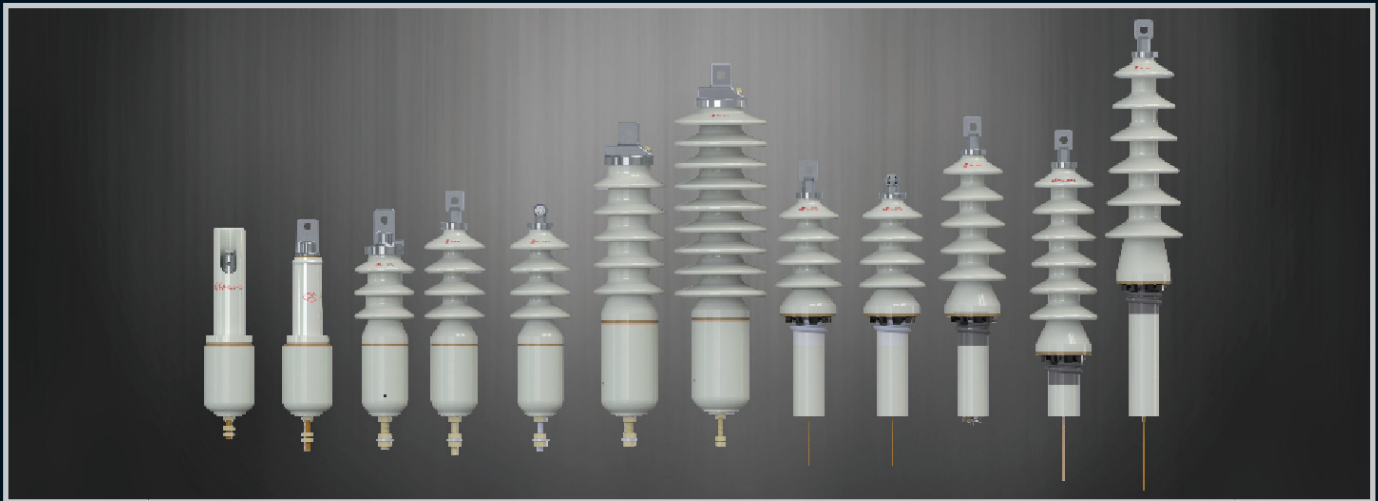


AU HV Bushing Range



Part Number	Description	U.m (kV)	Ir (A)	Tank Hole Size (mm)	LI (kV)	ACSD (kV)	CD (mm)	Stem Thread Size	Stem Pitch (mm)	Recommended Stem Torque (N.m)
040-372/X	AU 12K-30 Bushing	12	30	70	75	30	>410	M10	1,5	-
040-372/XE	AU 12K-30 CF Bushing (E)	12	30	70	75	30	>410	M10	1,5	-
040-372/XW	AU 12K-30 Bushing (W)	12	30	70	75	30	>410	M10	1,5	-
040-385/XW	AU 12K-300A 3S Bushing (W)	12	300	60	75	30	>285	M16	2	60
040-386/XE	AU 12K-30A 4S-PF Bushing (E)	12	30	60	75	30	>345	M12	1,75	45
040-389/XE	AU 12K-30A 4S-CF Bushing (E)	12	30	60	75	30	>345	M12	1,75	45
040-394/XE	AU 12K-200 4S Bushing (E)	12	200	60	75	30	>345	M12	1,75	45
040-390/XW	AU 12K-300A 4S Bushing (W)	12	300	60	75	30	>345	M16	2	60
040-391/XE	AU 12K-160 CB Bushing (E)	12	160	60	75	30	>160	M10	1,5	15
040-392/XE	AU 12K-1050 CB Bushing (E)	12	1050	83	40	16	>135	M24	2	120
040-393/XE	AU 11K-160 Shrouded Bushing (E)	12	160	60	75	30	>160	M10	1,5	15
040-373/X	AU 24K-30 Bushing	24	30	70	125	50	>530	M10	1,5	-
040-373/XE	AU 24K-30 CF Bushing (E)	24	30	70	125	50	>530	M10	1,5	-
040-373/XW	AU 24K-30 Bushing (W)	24	30	70	125	50	>530	M10	1,5	-
040-399/XW	AU 24K-300 5S Bushing (W)	24	300	80	125	50	>480	M16	2	70
040-374/X	AU 24K-30 XS Bushing	24	30	70	125	50	>640	M10	1,5	-
040-374/XW	AU 24K-30 XS Bushing (W)	24	30	70	125	50	>640	M10	1,5	-
040-378/X	AU 36K-30 Bushing	36	30	70	170	70	>720	M10	1,5	-
040-368/X	AU 44KV-120 9S Bushing	44	120	80	170	77	>1067	M10	1,5	25

*** Note:**
Detailed drawings available on request
Tank wall thickness minimum 3mm , maximum 6mm
Tank hole size tolerance is -0mm +1mm